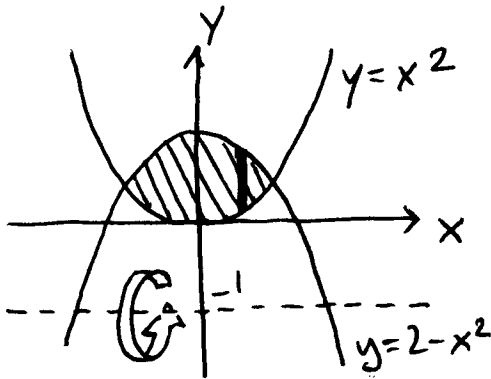


Math 2260 Quiz 2

Name _____

Points will be deducted for untidy or disorganized answers

1. (3 points) Use the **washer (disk) method** to find the volume of the solid that is generated by rotating the plane region bounded by $y = x^2$ and $y = 2 - x^2$ about the axis line $y = -1$.



2. (2 points) Use the **(cylindrical) shell method** to find the volume of the solid that is generated by rotating the region in the first quadrant bounded above by the curve $y = \sqrt{x^2 + 1}$ and on the right by the vertical line $x = \sqrt{3}$ about the y -axis.

