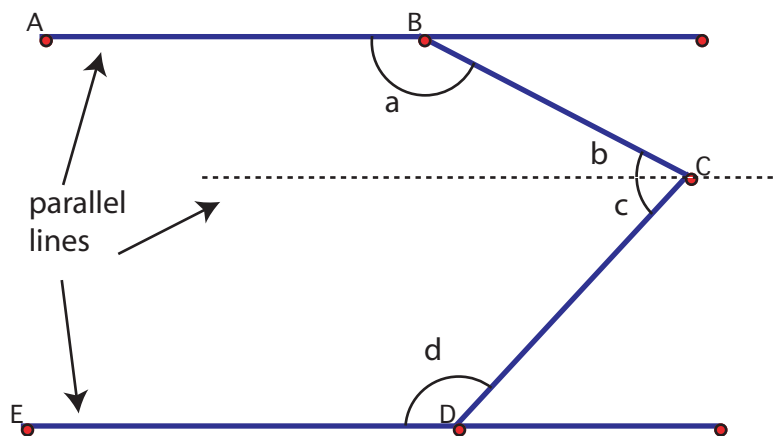


Hint 2 to the angle problem
from the GCTM and SCCTM October 2007 presentations on Focal Points
by Sybilla Beckmann

Draw a line through C that is parallel to the two parallel lines given (this new line is shown dashed). Then explain why $a + b = 180^\circ$ and $c + d = 180^\circ$.



There are also many other ways to solve this problem! See if you can find some others.